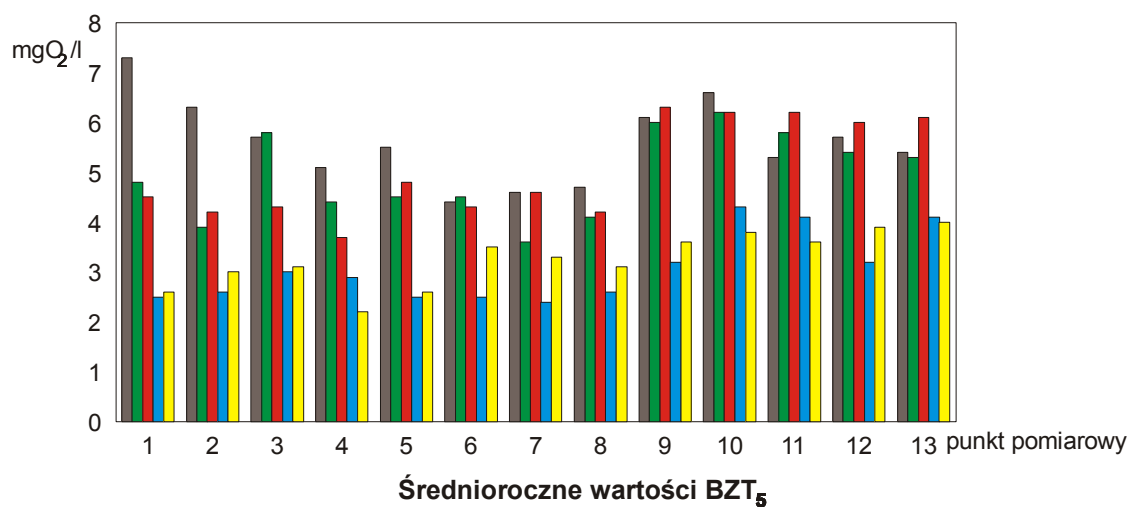
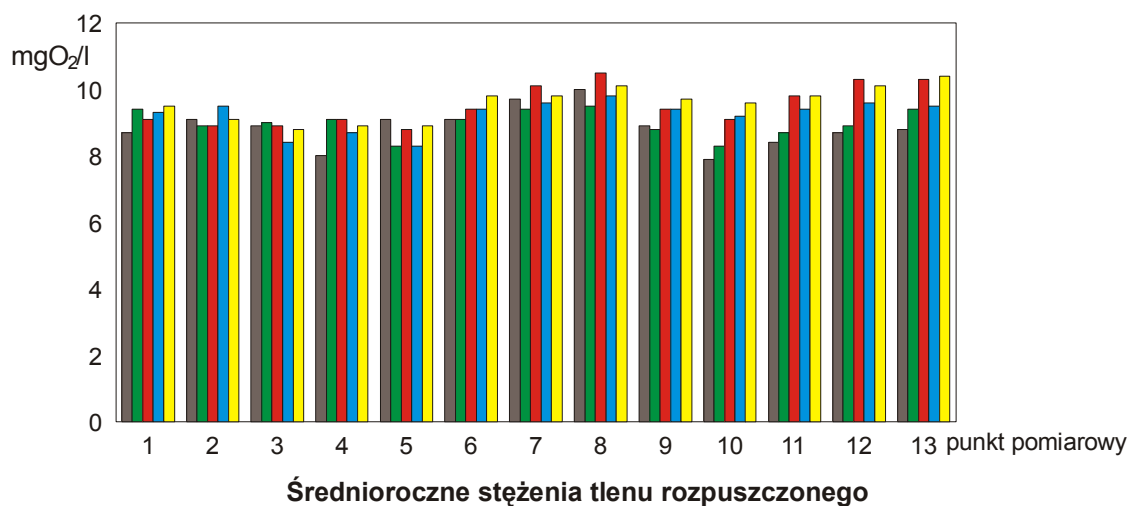


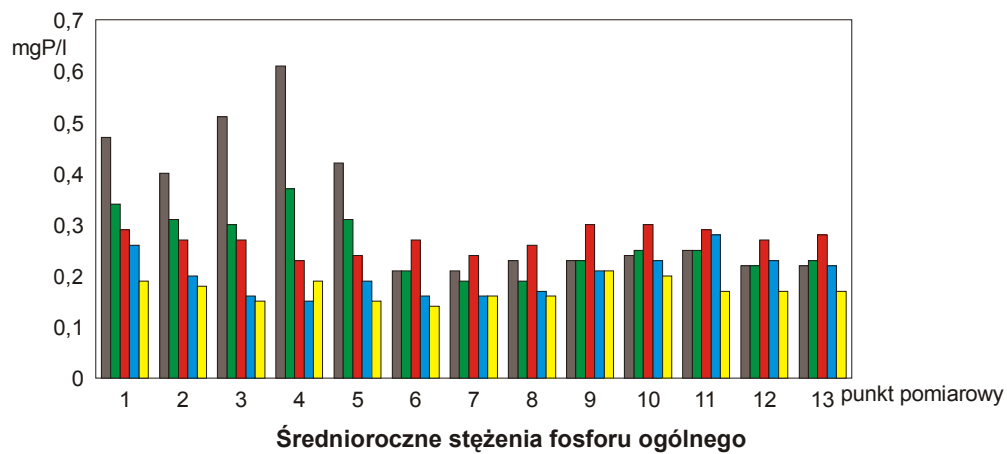
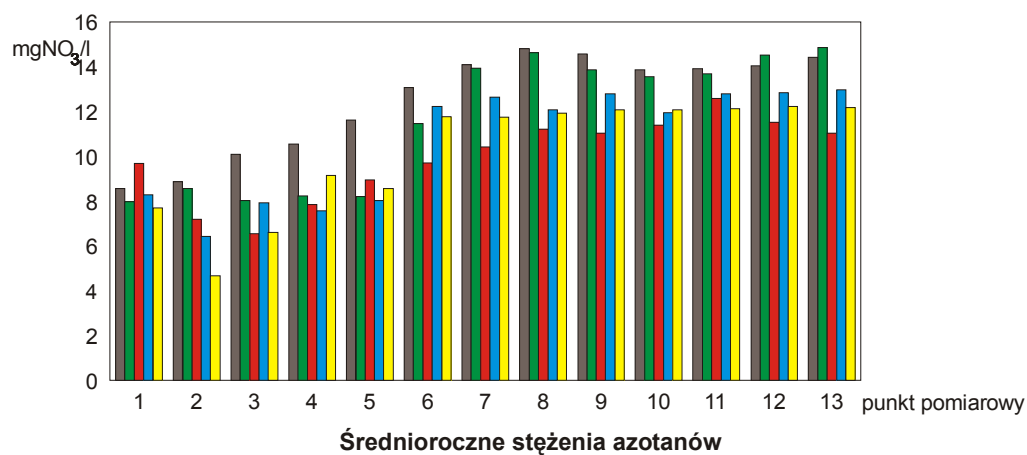
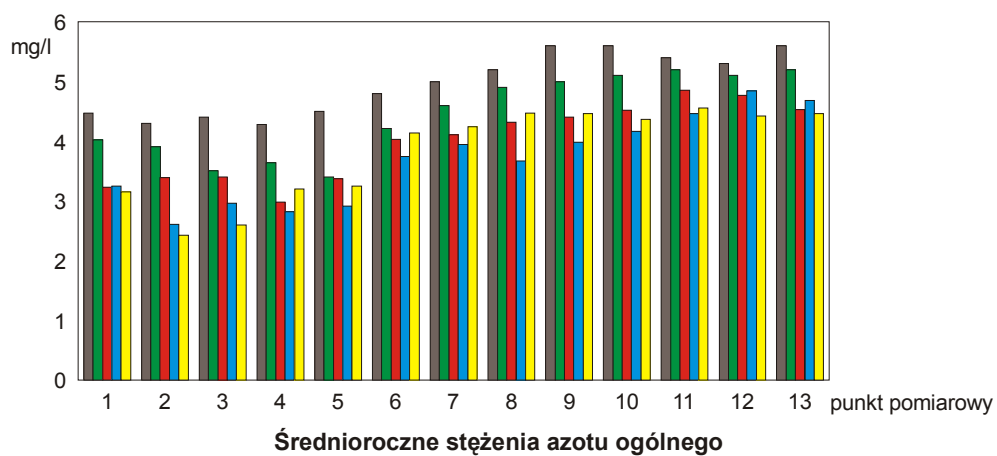
## Zmiany jakości wody rzeki Warty w latach 1998-2002

Punkty pomiarowe:

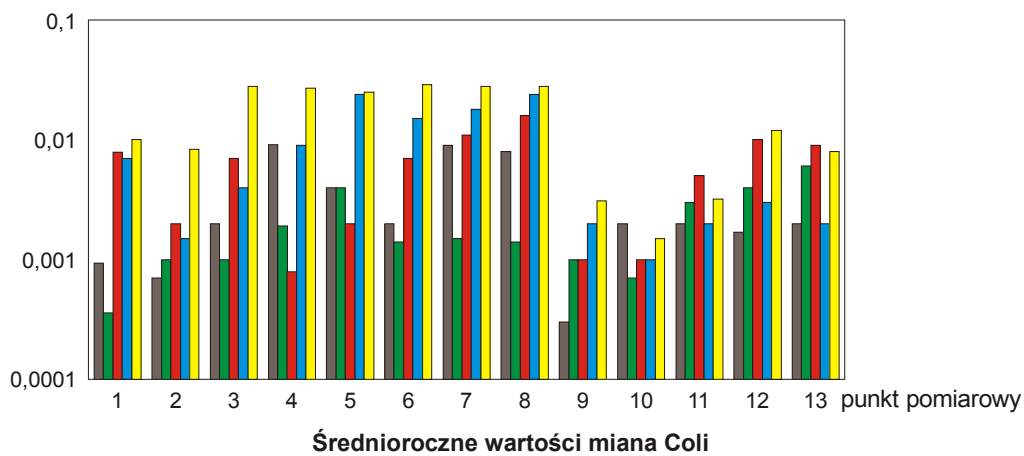
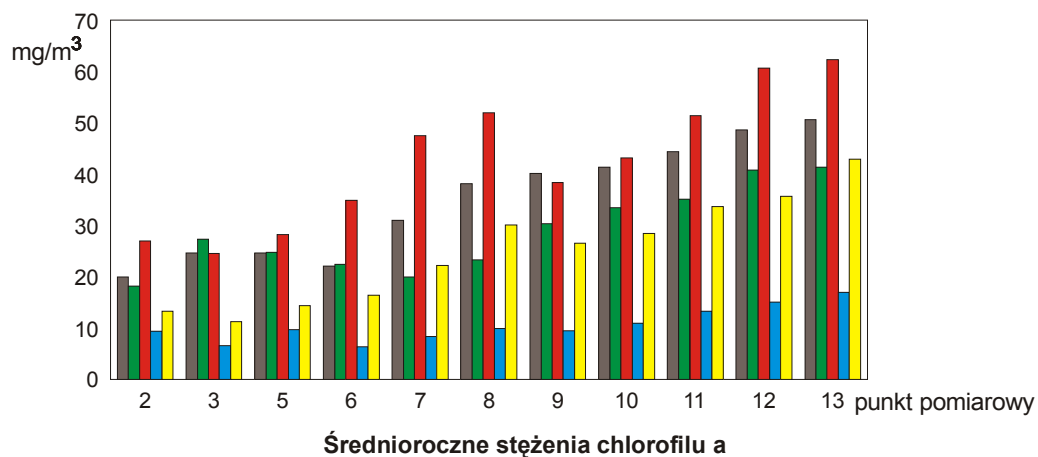
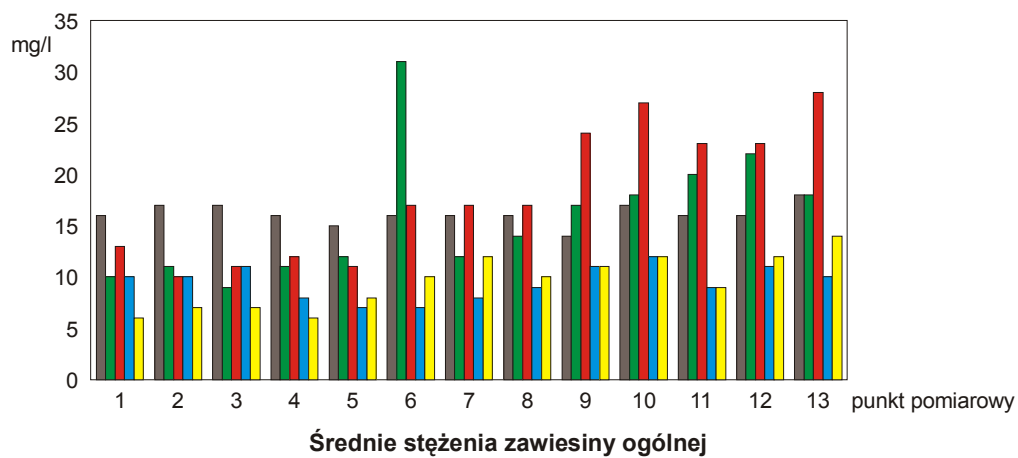
- |                                   |                       |
|-----------------------------------|-----------------------|
| 1 - Koło,                         | 8 - Luboń,            |
| 2 - Ochle - poniżej Koła,         | 9 - Bolechowo,        |
| 3 - Grójec - powyżej Konina,      | 10 - powyżej Obornik, |
| 4 - Sławsk - poniżej Konina,      | 11 - Obrzycko,        |
| 5 - Łąd - powyżej ujścia Mieszny, | 12 - Wartosław,       |
| 6 - Nowa Wieś Podgórna,           | 13 - Kłosowice.       |
| 7 - Kawcze - powyżej Śremu,       |                       |



1998
  1999
  2000
  2001
  2002



1998
  1999
  2000
  2001
  2002



1998
  1999
  2000
  2001
  2002