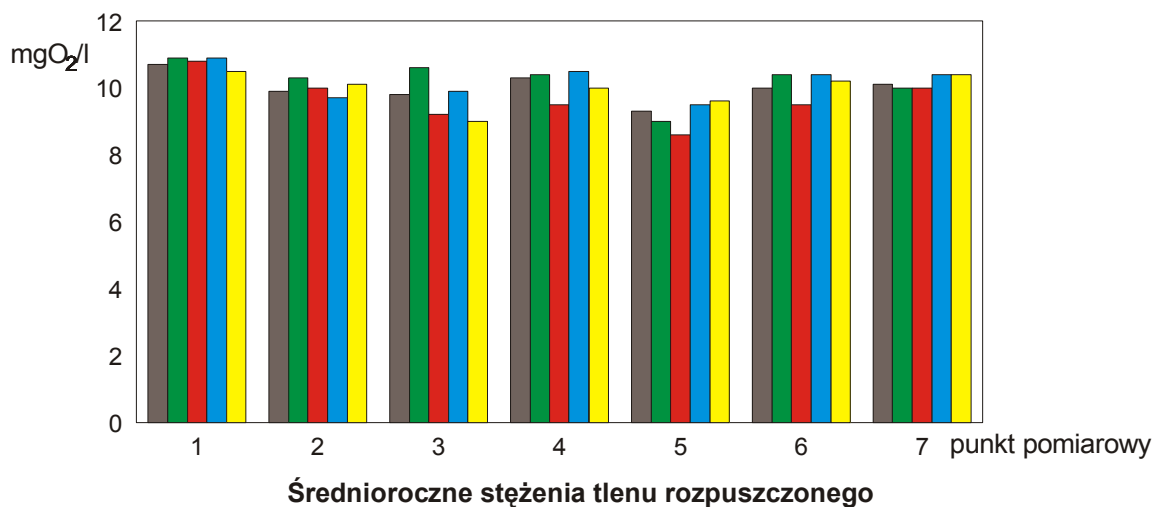
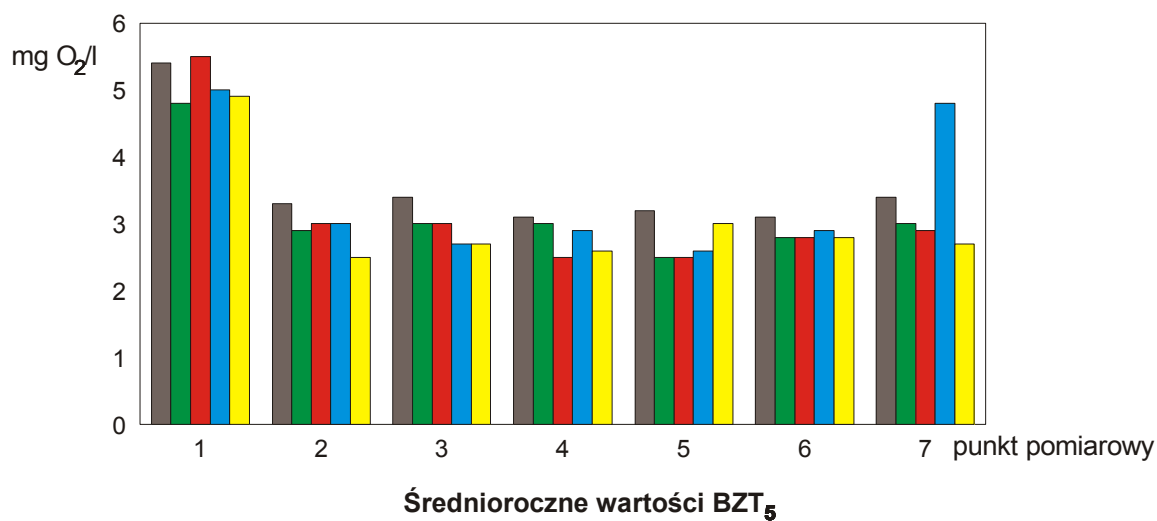


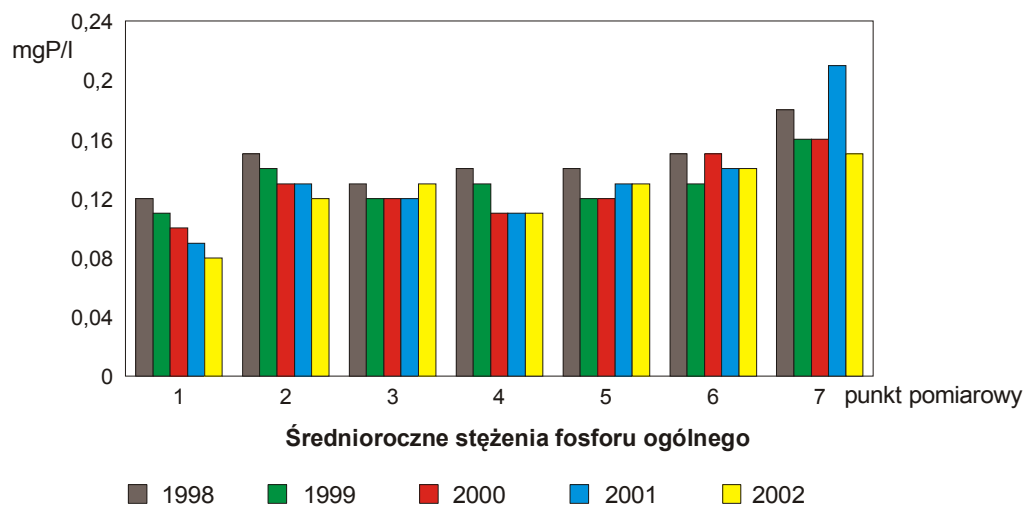
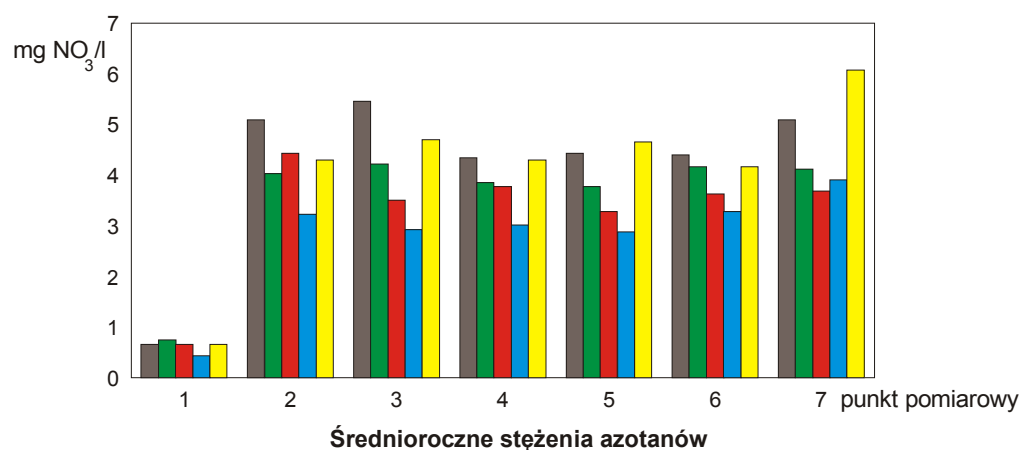
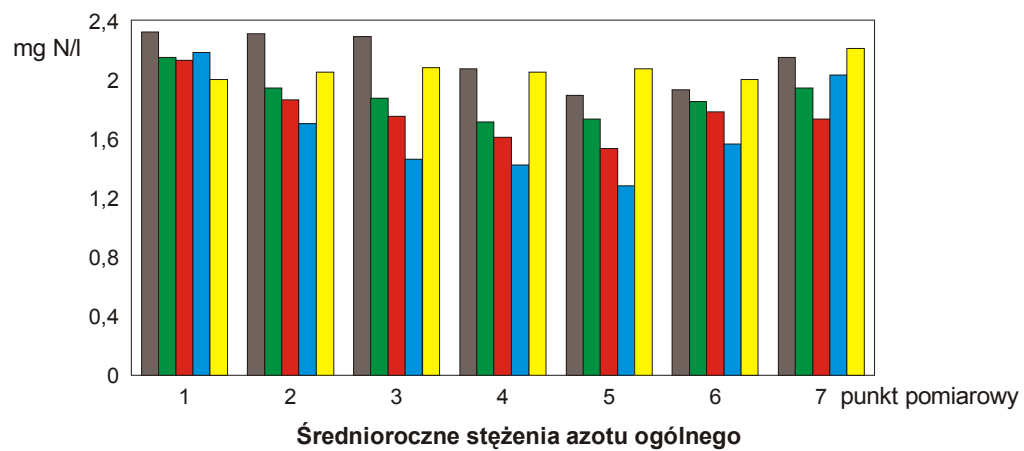
## Zmiany jakości wody rzeki Gwdy w latach 1998-2002

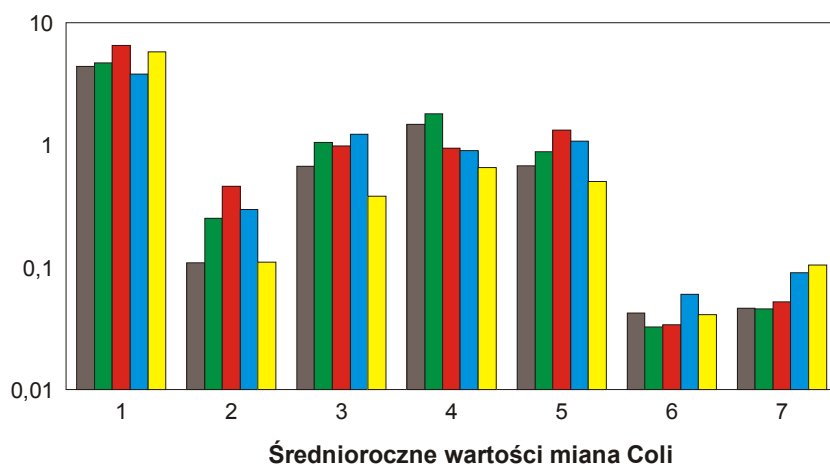
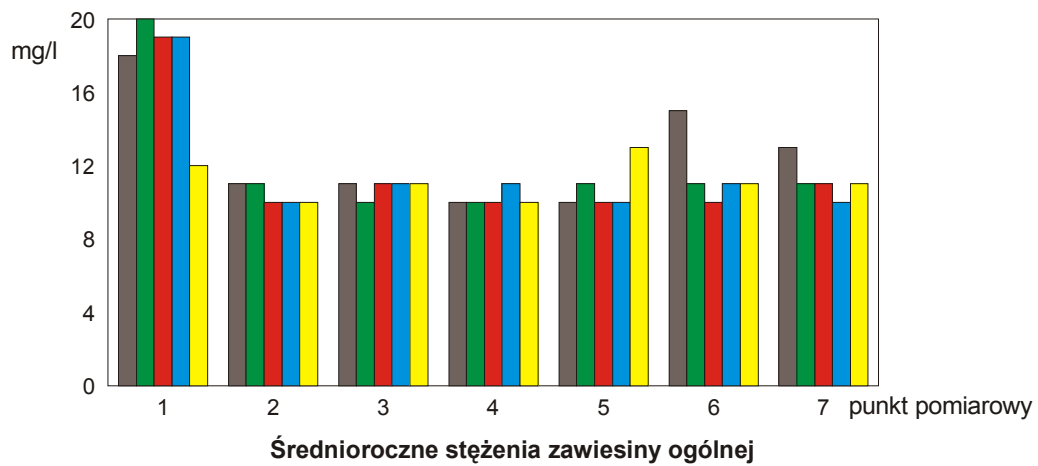
Punkty pomiarowe:

- 1 - Gwda Wielka,
- 2 - poniżej Łędyczka,
- 3 - Tarnowski Młyn,
- 4 - Krępsko,
- 5 - powyżej Piły,
- 6 - poniżej Piły,
- 7 - ujście do Noteci.



1998
  1999
  2000
  2001
  2002





1998
  1999
  2000
  2001
  2002