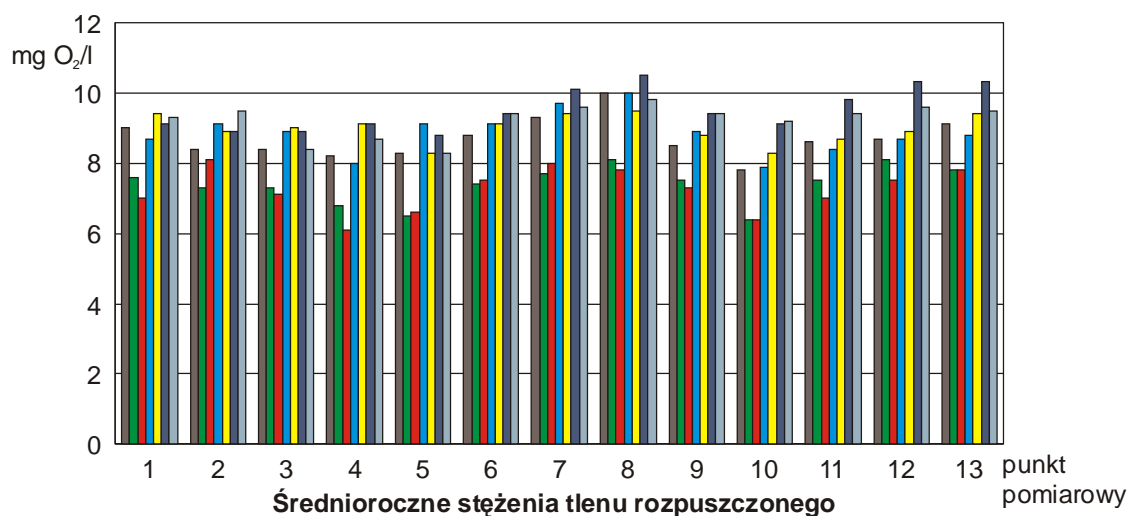
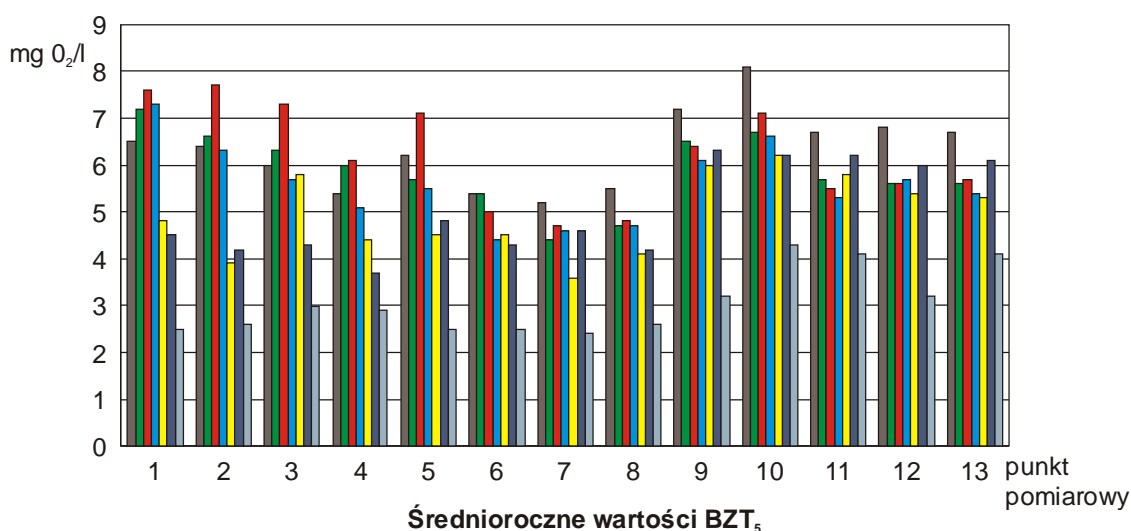


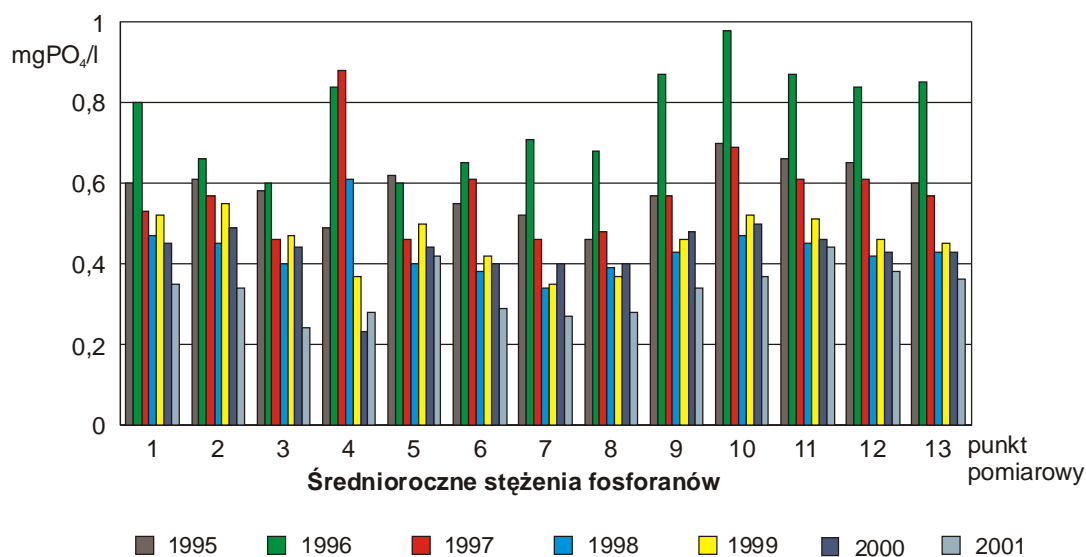
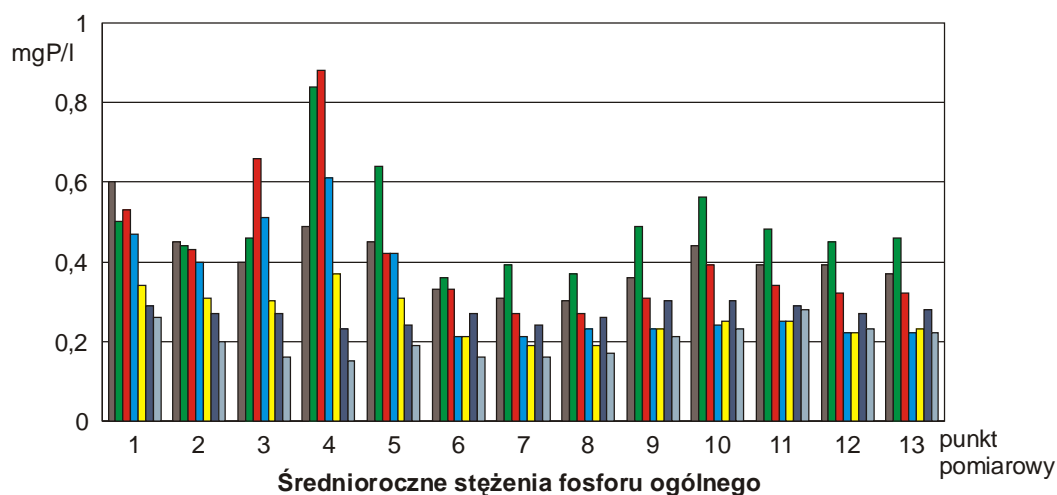
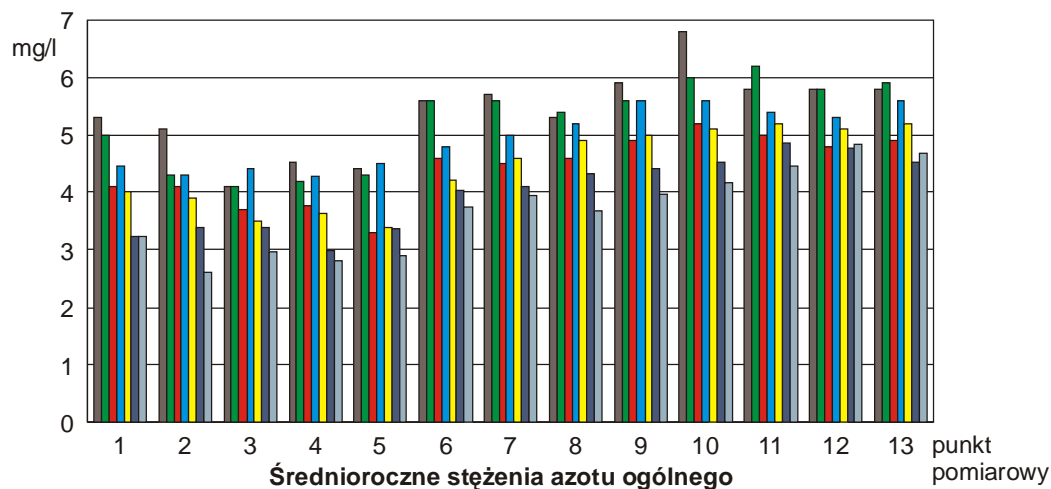
**Rys. 4.3. Zmiany jakości wody rzeki Warty w latach 1995-2001**

Punkty pomiarowe:

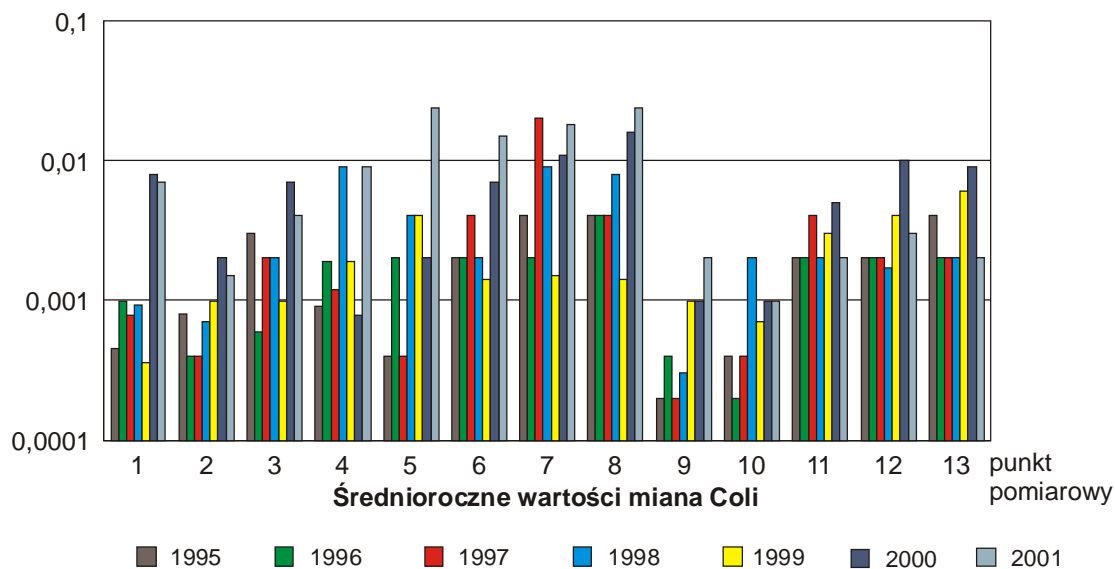
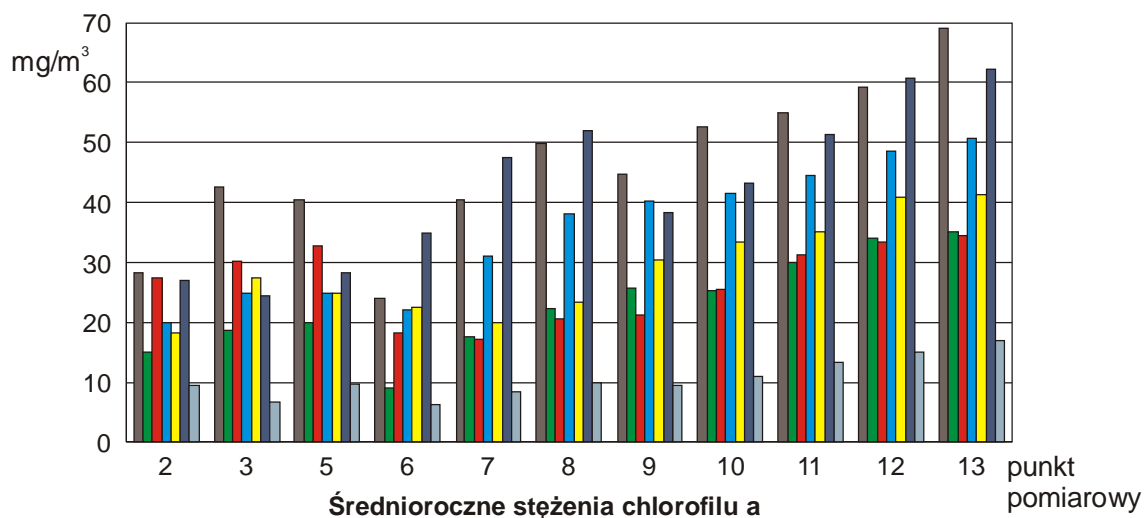
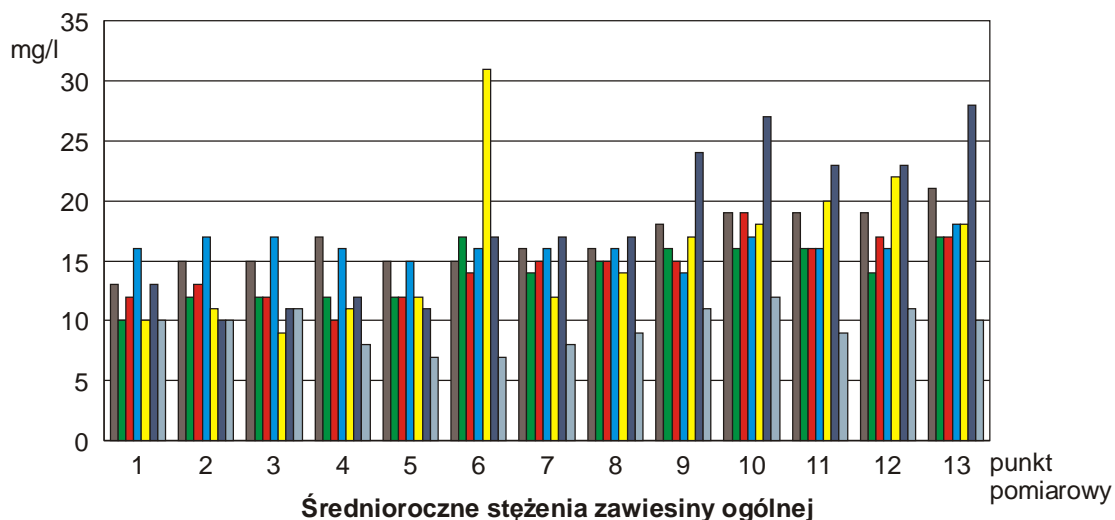
- |                            |                       |
|----------------------------|-----------------------|
| 1 - wodowskaz Koło,        | 8 - Bolechowo,        |
| 2 - poniżej Koła,          | 9 - Luboń,            |
| 3 - powyżej Konina,        | 10 - powyżej Obornik, |
| 4 - powyżej Konina,        | 11 - Obrzycko,        |
| 5 - powyżej ujścia Meczny, | 12 - Wartosław,       |
| 6 - Nowa Wieś Podgórna,    | 13 - Kłosowice.       |
| 7 - powyżej Śremu,         |                       |



1995
  1996
  1997
  1998
  1999
  2000
  2001



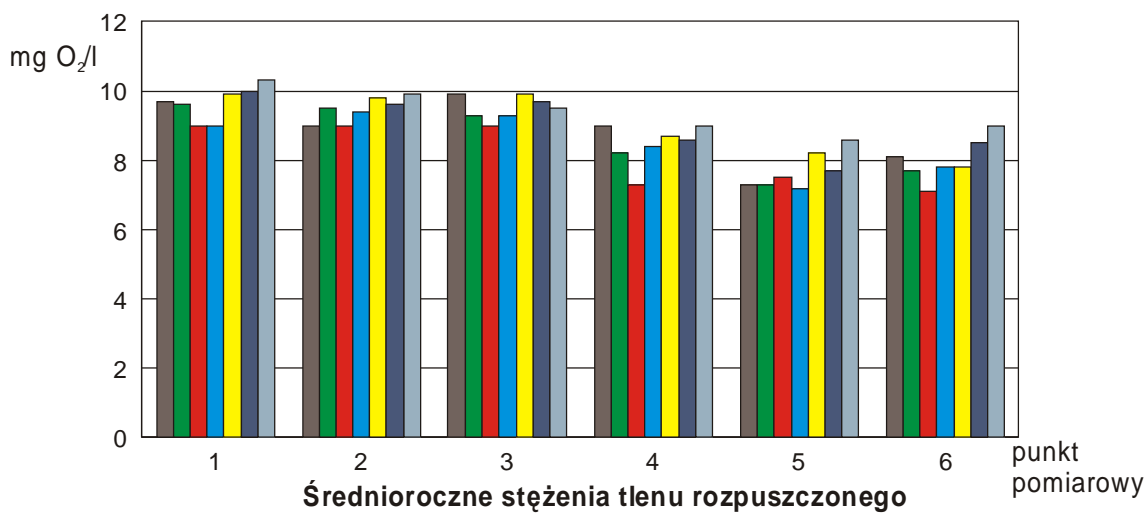
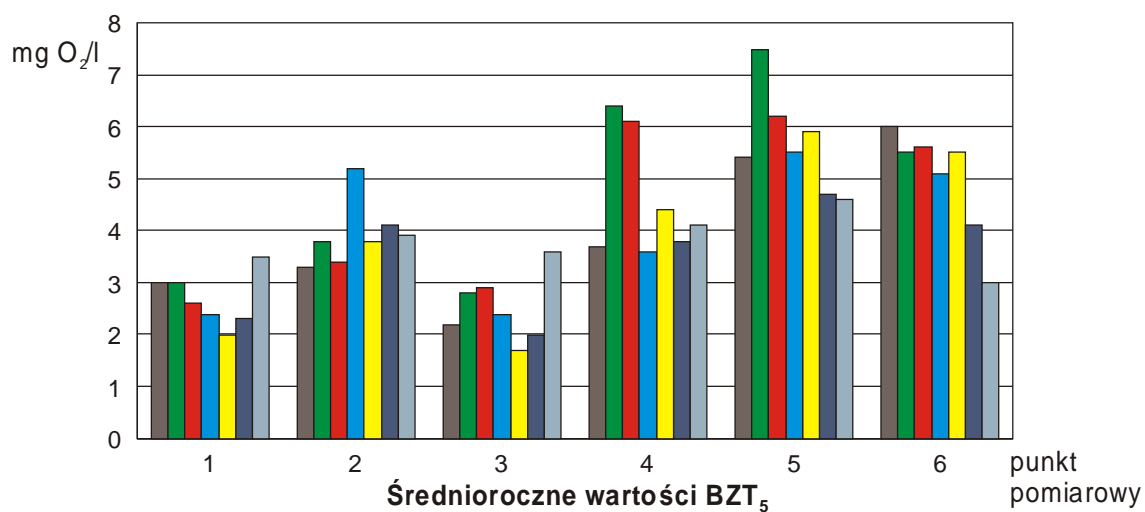
1995
  1996
  1997
  1998
  1999
  2000
  2001



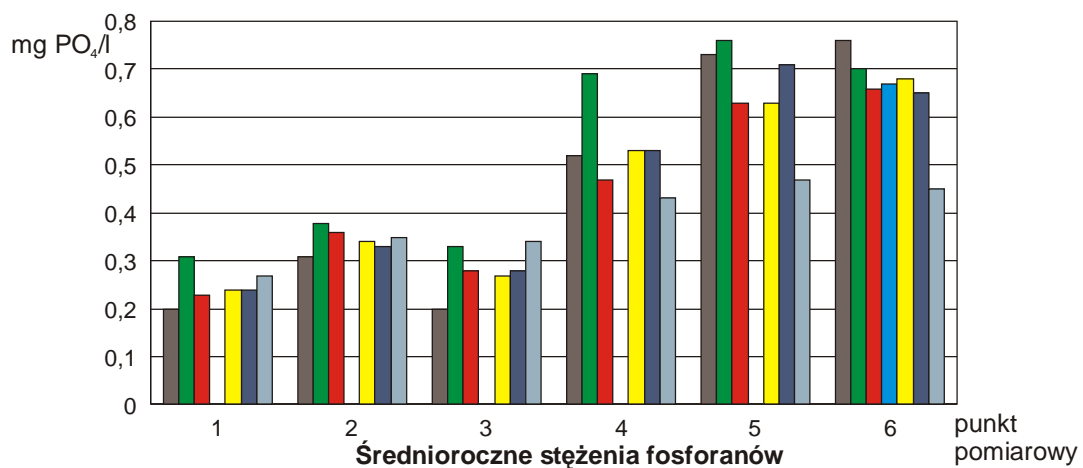
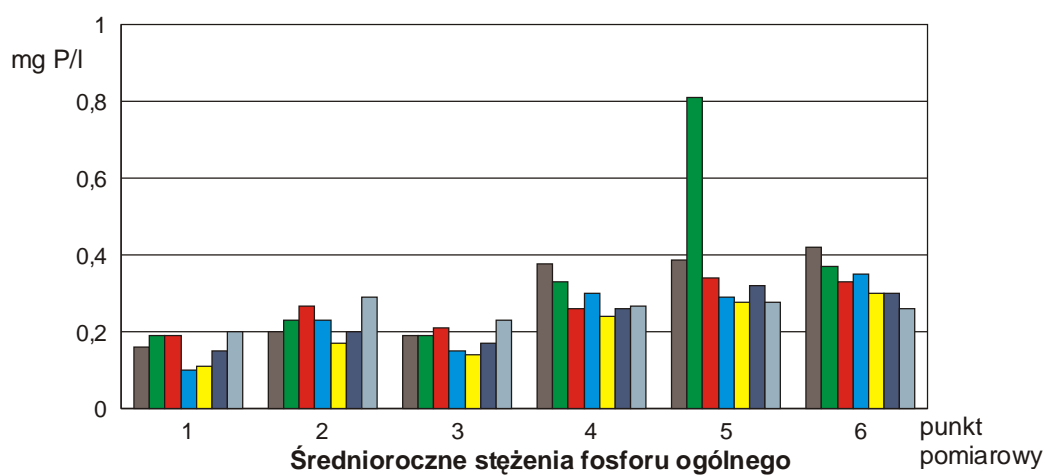
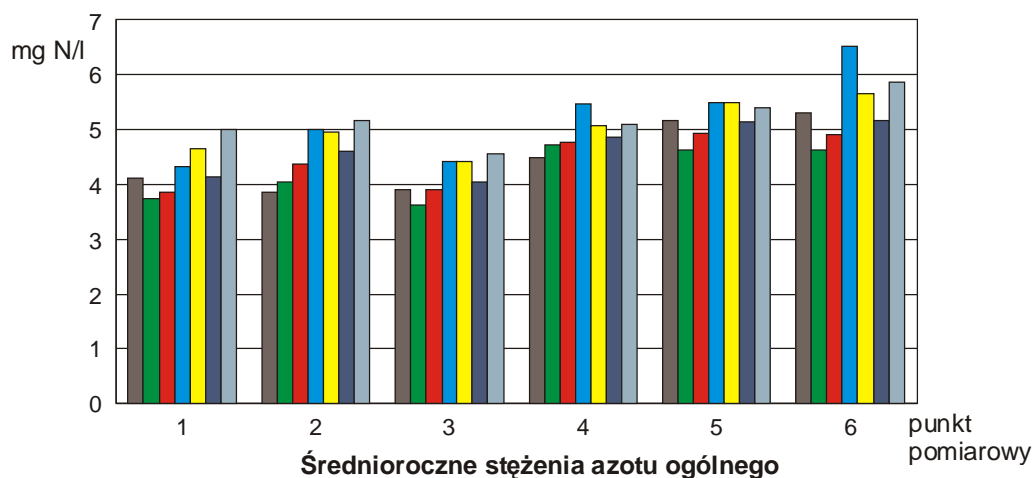
Rys. 4.4. Zmiany jakości wody rzeki Proсны w latach 1995-2001

Punkty pomiarowe:

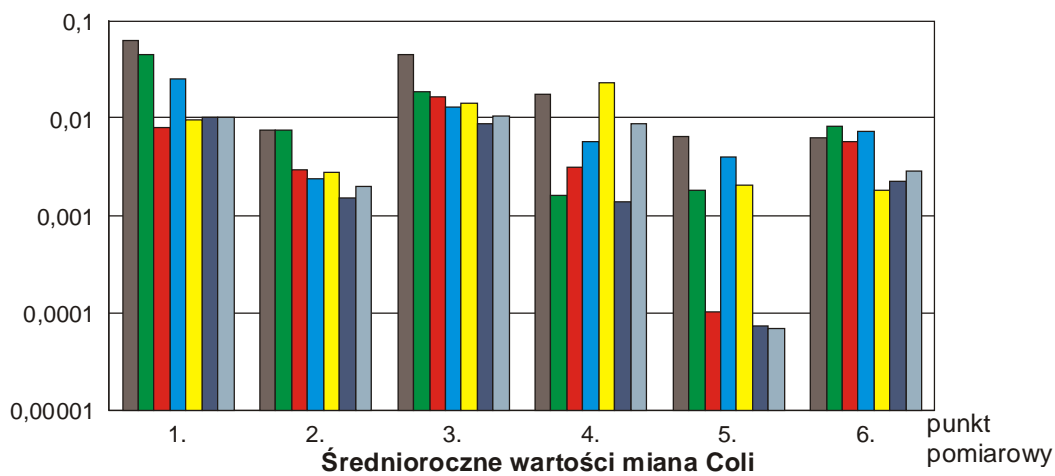
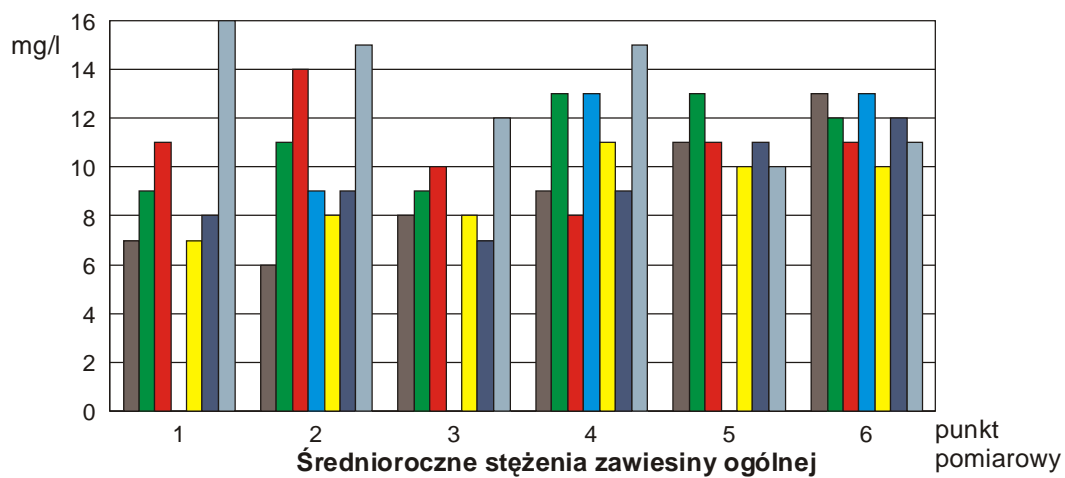
- |                     |                    |
|---------------------|--------------------|
| 1 - Podbolesławiec, | 4 - Żydów,         |
| 2 - Mirków,         | 5 - Popówek,       |
| 3 - Wielowieś,      | 6 - Ruda Komorska. |



■ 1995   ■ 1996   ■ 1997   ■ 1998   ■ 1999   ■ 2000   ■ 2001



1995
  1996
  1997
  1998
  1999
  2000
  2001

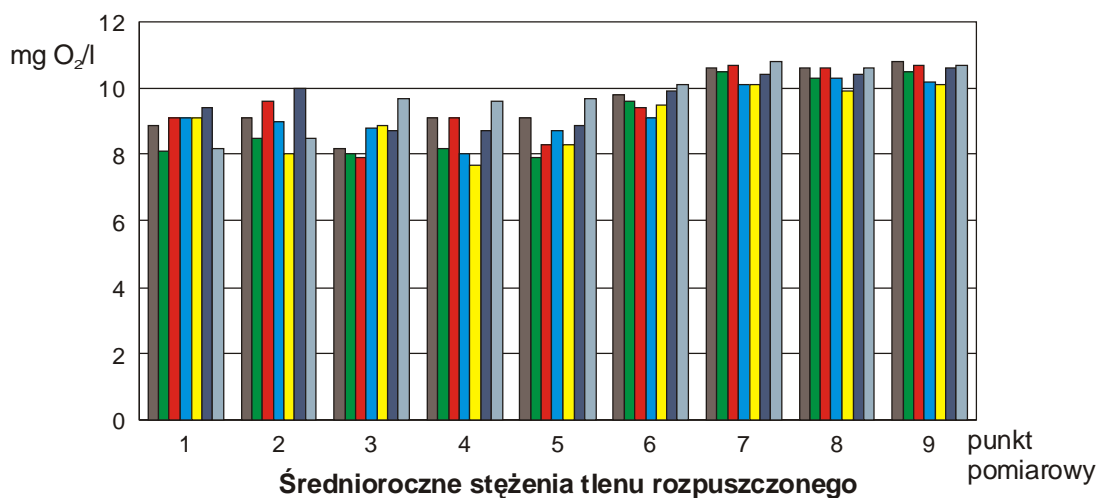
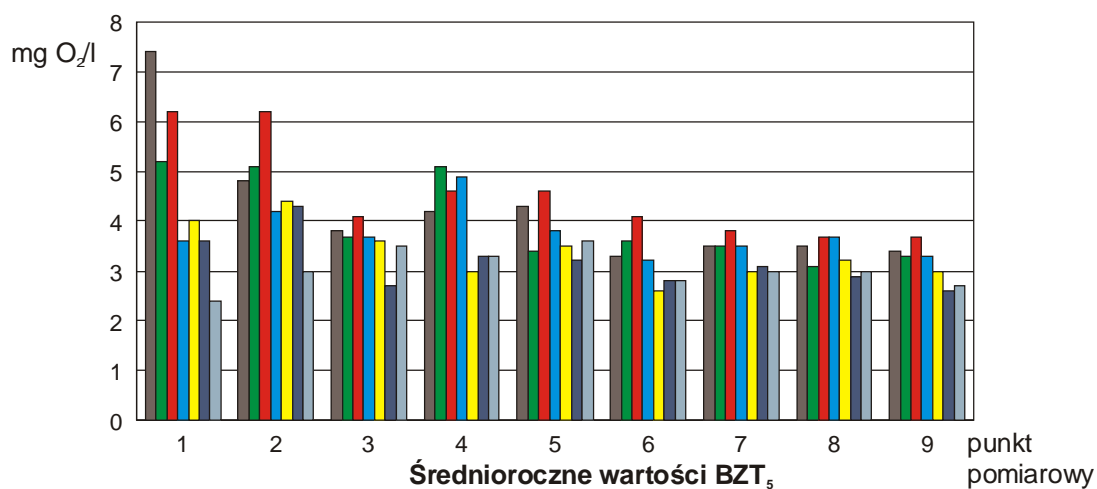


1995  
  1996  
  1997  
  1998  
  1999  
  2000  
  2001

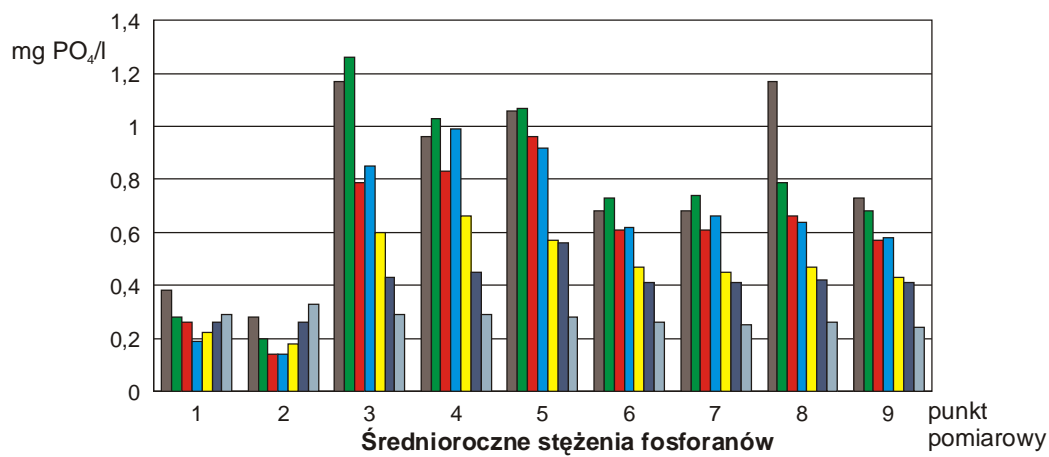
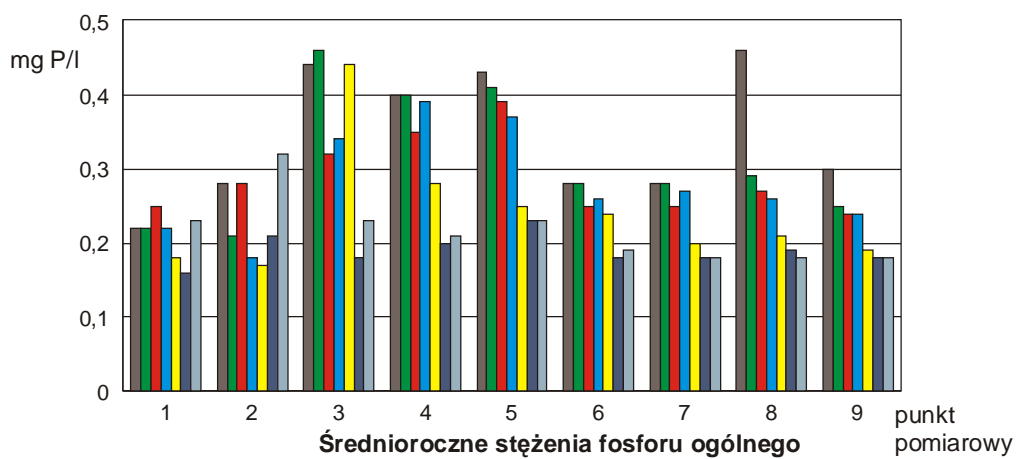
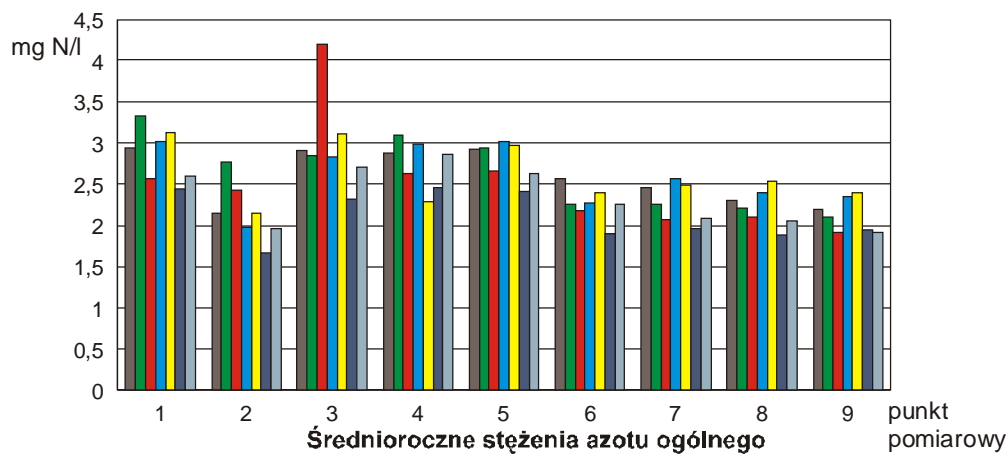
Rys. 4.5. Zmiany jakości wody rzeki Noteci w latach 1995-2001

Punkty pomiarowe:

- 1 - Łysek,
- 2 - Przewóz,
- 3 - poniżej ujścia Łobżonki,
- 4 - Milcz
- 5 - powyżej ujścia Gwdy,
- 6 - Mirosław Ujski
- 7 - poniżej ujścia Trzcianki,
- 8 - poniżej Czarnkowa,
- 9 - powyżej ujścia Drawy.

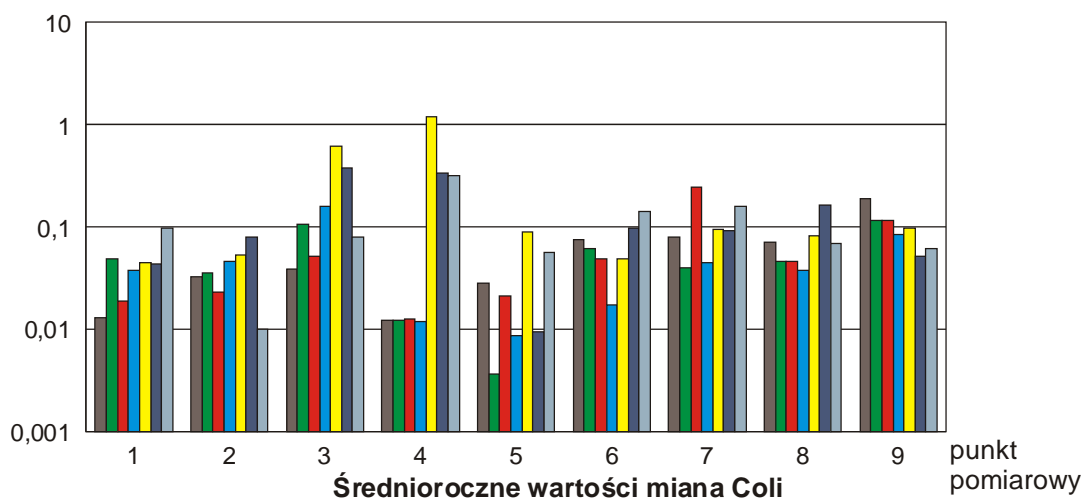
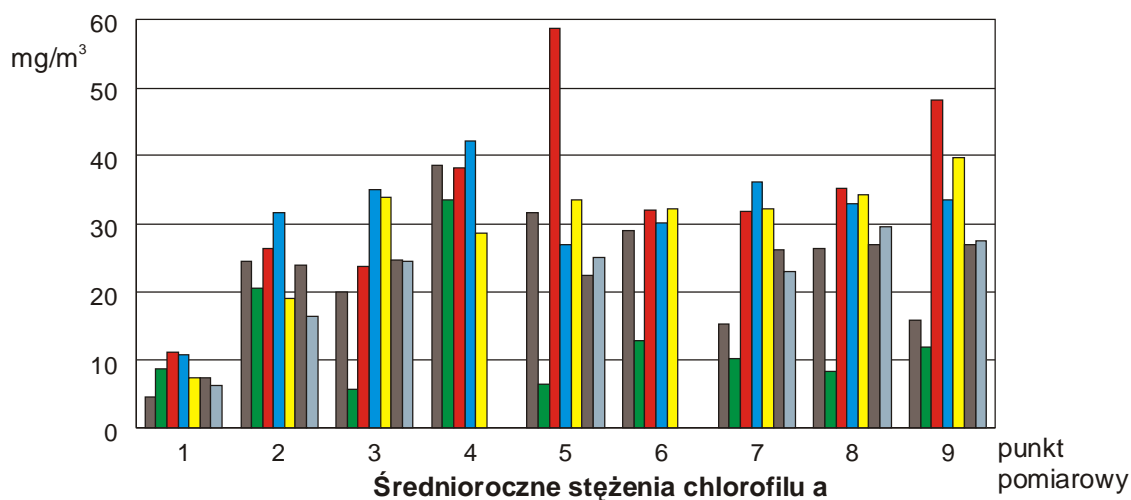
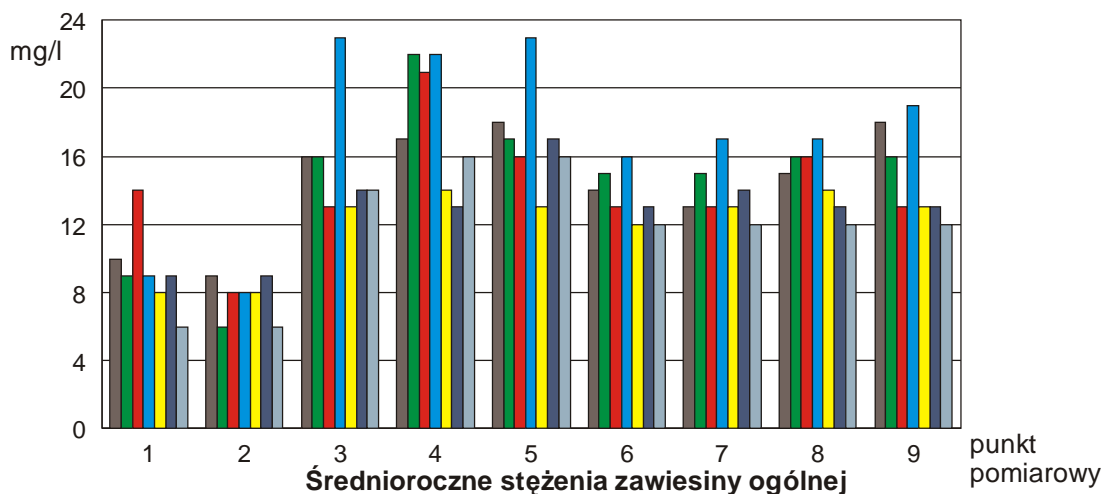


■ 1995   ■ 1996   ■ 1997   ■ 1998   ■ 1999   ■ 2000   ■ 2001



■ 1995 ■ 1996 ■ 1997 ■ 1998 ■ 1999 ■ 2000 ■ 2001



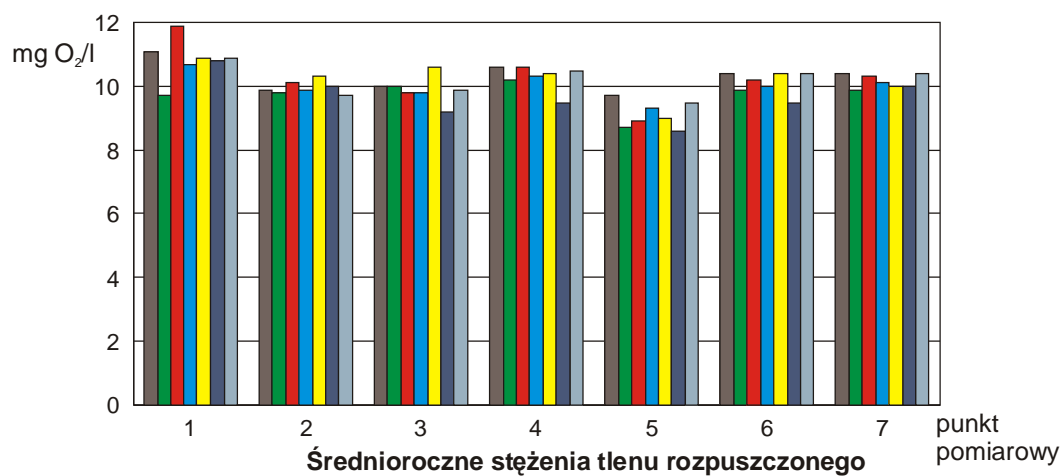
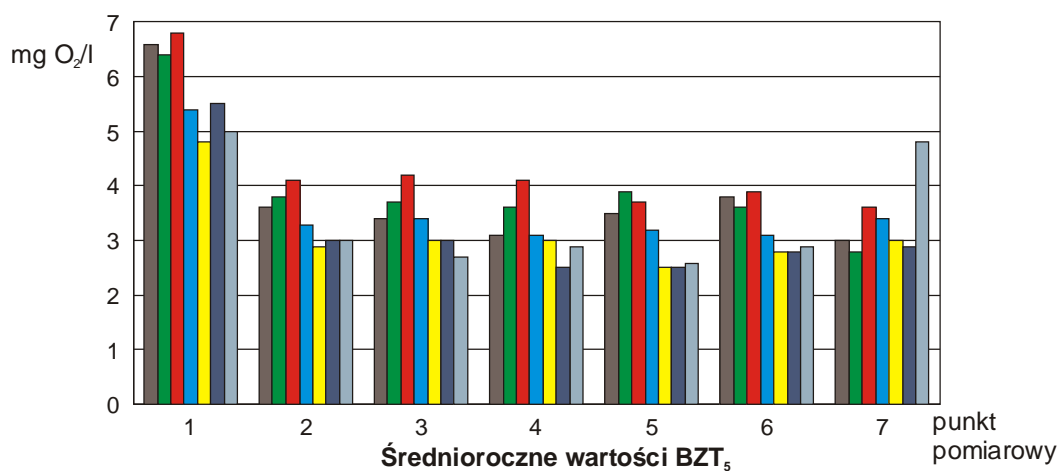


1995
  1996
  1997
  1998
  1999
  2000
  2001

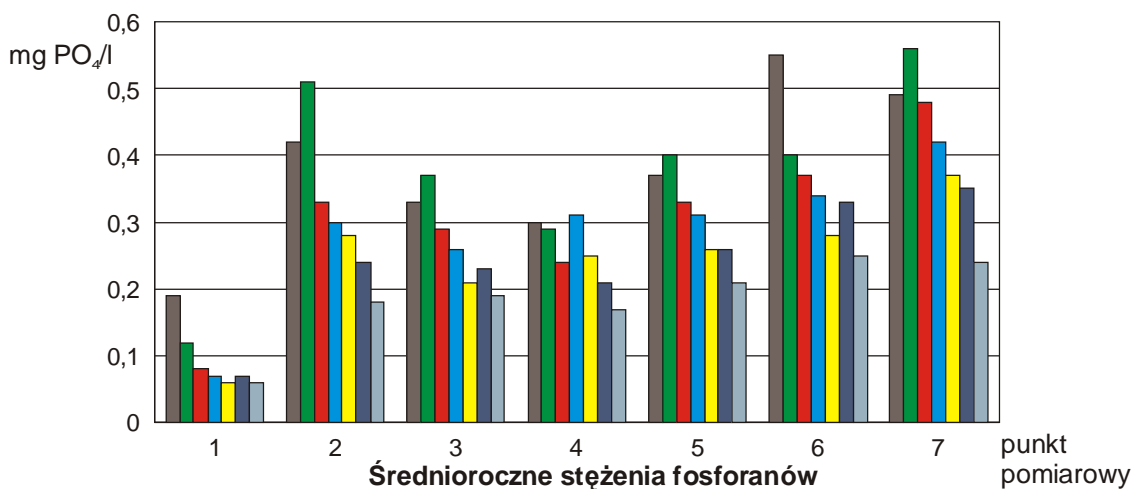
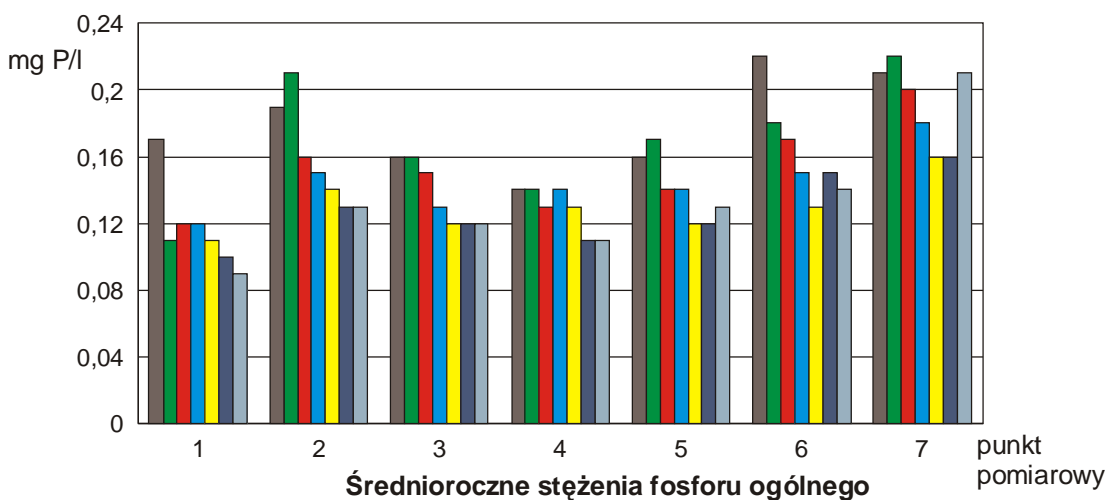
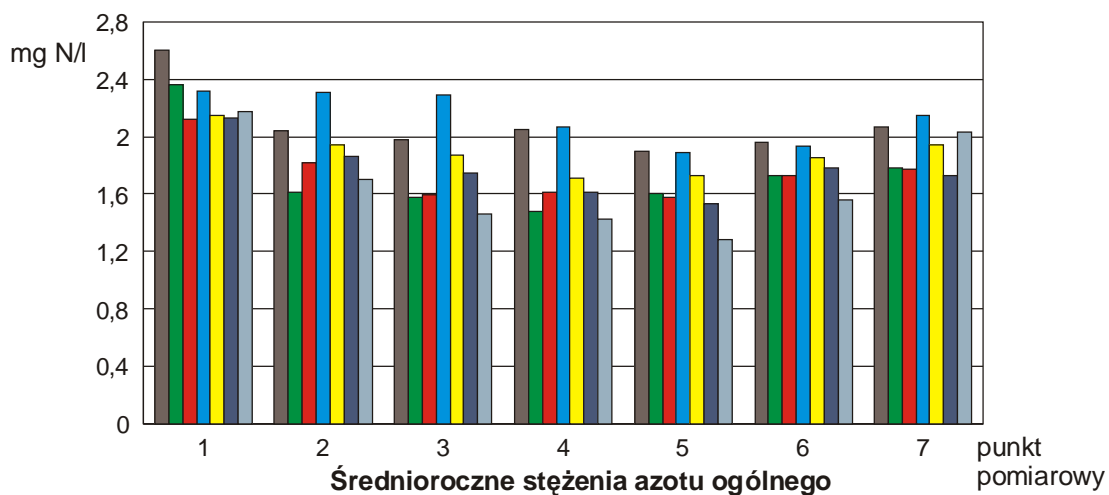
Rys. 4.6. Zmiany jakości wody rzeki Gwdy w latach 1995-2001

Punkty pomiarowe:

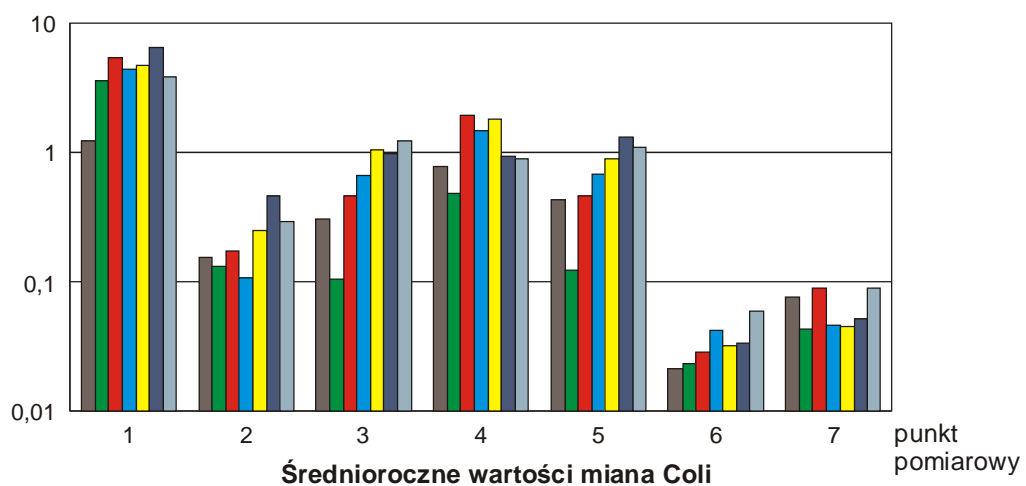
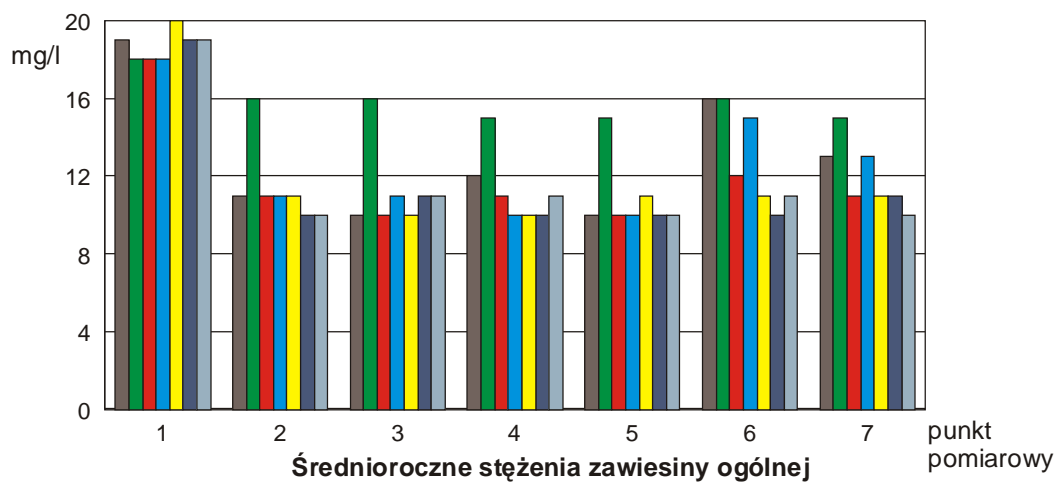
- |                       |                       |
|-----------------------|-----------------------|
| 1 - Gwda Wielka,      | 5 - powyżej Piły,     |
| 2 - poniżej Łędyczka, | 6 - poniżej Piły,     |
| 3 - Tarnowski Młyn,   | 7 - ujście do Noteci. |
| 4 - Krępsko,          |                       |



■ 1995   ■ 1996   ■ 1997   ■ 1998   ■ 1999   ■ 2000   ■ 2001



1995
  1996
  1997
  1998
  1999
  2000
  2001



1995
  1996
  1997
  1998
  1999
  2000
  2001